



DCO Submission

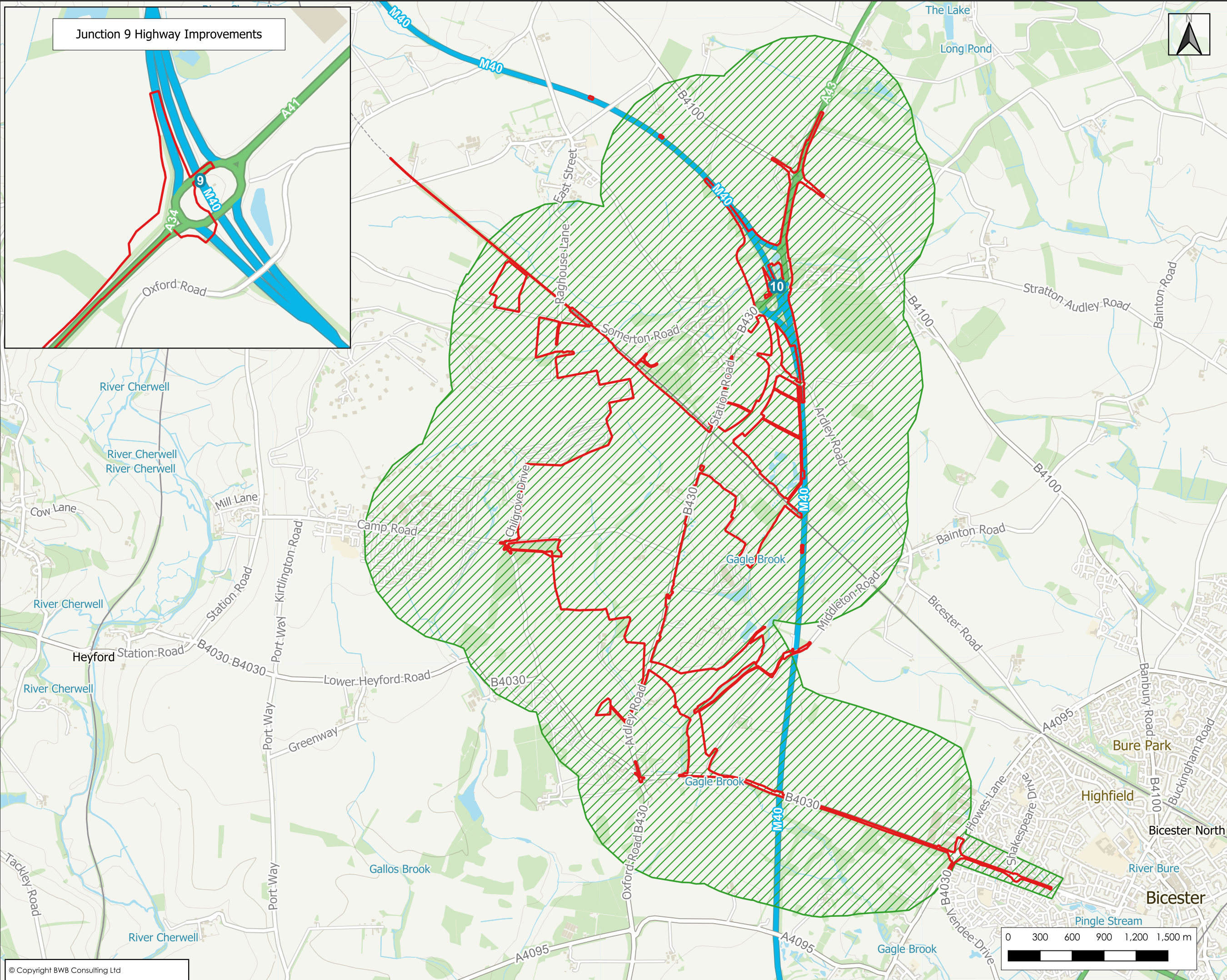
Environmental Statement

Chapter 9: Water Environment
Figure 9.1: Study Area

Document 6.9G

On behalf of
Oxfordshire Railfreight Limited

Prepared by BWB Consulting Ltd
February 2026



Junction 9 Highway Improvements

- Notes**
1. Do not scale this drawing. All dimensions must be checked/ verified on site. If in doubt ask.
 2. This drawing is to be read in conjunction with all relevant architects, engineers and specialists drawings and specifications.
 3. All dimensions in millimetres unless noted otherwise. All levels in metres unless noted otherwise.
 4. Any discrepancies noted on site are to be reported to the engineer immediately.
 5. Cartography © OpenStreetMap contributors | Contains OS data © Crown copyright (2026) | Aerial Imagery used with permission from Microsoft

- Key**
- OxSRFI Application Site
 - Water Environment Study Area

P03	10.02.26	FINAL	CG	CD
P02	02.01.26	FINAL DRAFT	CG	CD
P01	09.09.25	PRELIMINARY ISSUE	CG	CD
Rev	Date	Details of issues/ revision	Drw	Rev

BWB
 CONSULTANCY | ENVIRONMENT
 INFRASTRUCTURE | BUILDINGS
 Birmingham | 0121 233 3322
 Leeds | 0113 233 8000
 London | 0207 407 2879
 Manchester | 0161 233 4266
 Nottingham | 0115 924 1100
 www.bwbconsulting.com

Client
**OXFORDSHIRE STRATEGIC RAIL
 FREIGHT INTERCHANGE LIMITED**

Project Title
**OXFORDSHIRE STRATEGIC RAIL
 FREIGHT INTERCHANGE**

Drawing Title
**ES CHAPTER 9
 FIGURE 9.1 STUDY AREA**

Drawn:	C GARDNER	Reviewed:	C DODD
BWB Ref:	NTH 2479	Date:	10.02.26
Scale@A3:	1:32,250		

Drawing Status
FINAL

Project - Originator - Zone - Level - Type - Role - Number	Status	Rev
OXSRFI-BWB-ZZ-XX-DR-YE-1249	S2	P01

